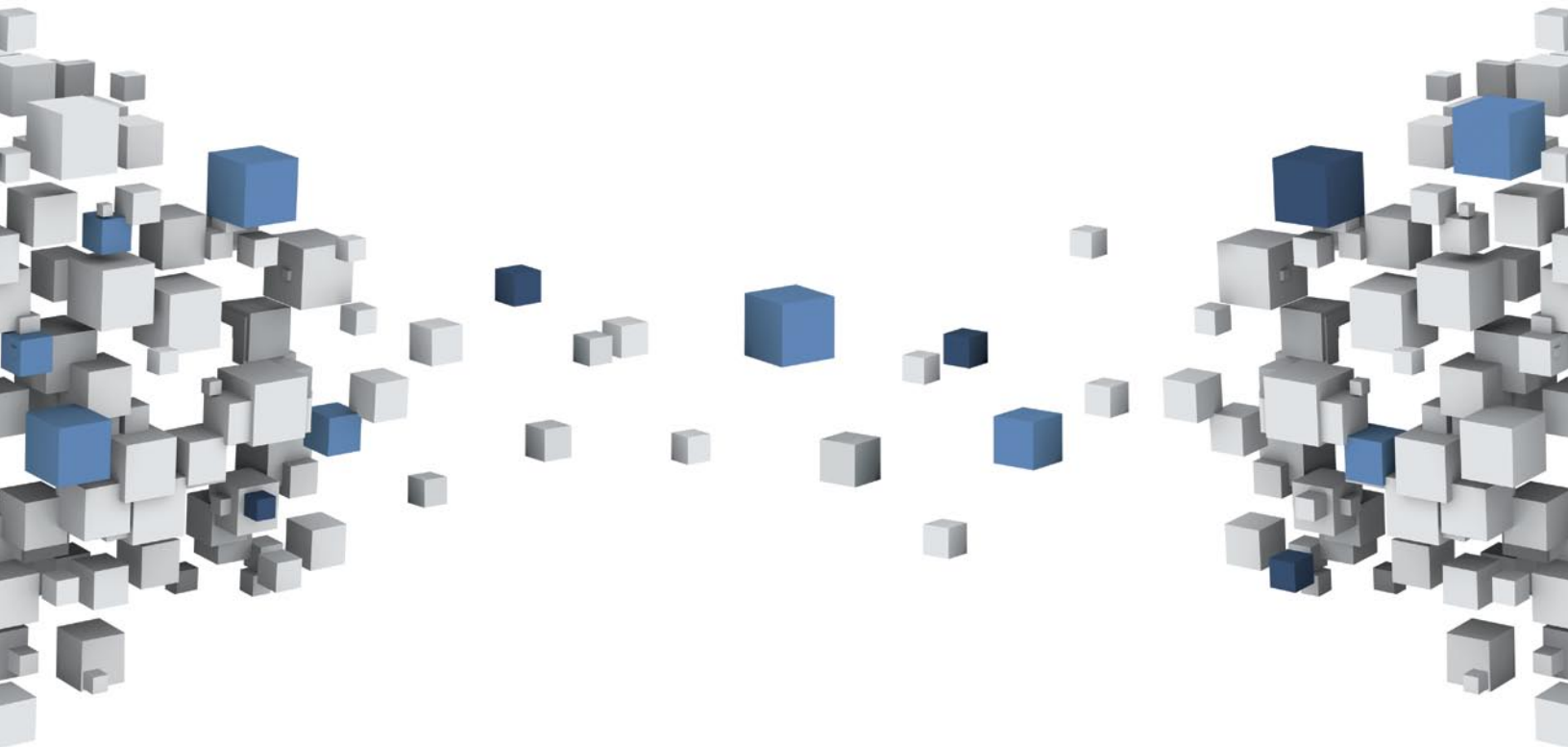
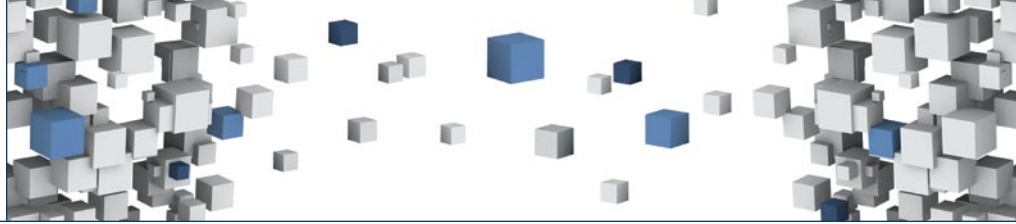




Connect your trading community,
enable eBusiness conversations and
improve supply-chain understanding.





About InterTrade

With InterTrade, you can better comprehend your supply-chain information and profit from faster bottom-line benefits and more informed decision making.

InterTrade offers innovative electronic commerce solutions that allow its 700 current clients to manage automated B2B/EDI interactions within their trading communities. Since 1996, InterTrade solutions have been making inter-enterprise collaboration and supply-chain optimization easier and more cost effective.

From totally integrated collaboration and product-data synchronization to on-boarding campaign management for suppliers or customers, InterTrade consistently delivers simple, fast and effective results. ■



Multiple benefits for Purchasing, Logistics, Operations, Finance and IT executives

Let InterTrade help you **connect** your organization with your trading-partner community through EDI, portals or other means. One single connection gives you access to all your suppliers and customers, allows all standard B2B protocols and supports any document format that you need to exchange.

With InterTrade you can **convert** with your trading partners easily using the InterTrade B2B integration hub and data synchronization tools, which allow you to focus on your business processes while InterTrade mitigates formats, protocols and process choreography and gives you complete transaction visibility and control.

Businesses using InterTrade can **comprehend** the information contained in transactions to manage vendor compliance, customer service level and other business drivers. InterTrade tools enhance visibility over business activity by monitoring the right parameters, calculating key performance indicators (KPI) in real time and allowing you to act on the information. ■

Connect_

- Let InterTrade manage trading-community on-boarding. We deal with the complications on your behalf.
- Keep your internal resources focused on core business functions.
- Let us handle the long, difficult and resource-hungry process of connecting a large trading community. We make it easy, for you and for your partners.
- Take advantage of InterTrade's expertise and methodology in channeling energies to successfully produce the expected outcome for your on-boarding campaign.

Supply-chain collaboration is your focus

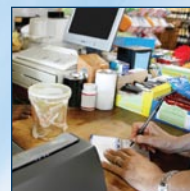
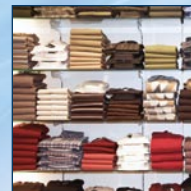
The current highly competitive business environment forces many companies to reinvent their supply-chain and make it more responsive to changes in customer demand.

Supply-chain collaboration is a key component to enable such strategies, but this collaboration must evolve at the same pace as the supply chain itself. InterTrade solutions allow corporations to facilitate their supply-chain-integration process and even delegate the execution of entire B2B/EDI integration projects.

The unique combination of the on-demand TradeLinks platform and the InterTrade Professional Services Team's supply-chain expertise allow you to focus on your core competencies, secure in the knowledge that your electronic trading relationships are optimally managed.

Get ahead of the curve and trust InterTrade to be your B2B subject matter expert. Profits materialize more quickly when the right partner is on your team. ■

Connect your trading community,
enable eBusiness conversations and
improve supply-chain understanding.



Converse_

- Benefit from a complete set of B2B integration tools to address the diversity of your trading partner's capabilities, whether they are integrated using the Web or even fax.
- Control business-document exchanges in real time.
- Exchange transactions 24/7.
- Synchronize your data through private catalogs and global data pools.

Comprehend_

- Add clarity to your business exchanges and draw meaningful, actionable conclusions.
- Monitor supply-chain processes in real time.
- Graph business activity and supplier performance.
- Automate transaction flow, with transactions that require follow-up flagged for your attention.

Connect_

- Trading Community Management
 - On-boarding Campaigns
- Network Connectivity
 - Tier-1 VAN
 - Direct Connection Brokerage
 - Secure File Transfer
- B2B Integration Services
 - Internal Systems Integration
 - Document Mapping
 - Document Testing

Converse_

- B2B Exchange Platform
 - Data Transformation
 - Network Services
- B2B Trading Portals
 - Supplier Portal
 - Customer Portal
- Data Synchronization
 - Private Catalogs
 - Data Pool Management
- Transaction Visibility, Monitoring and Control
- Compliance Management

Comprehend_

- Customer Activity Monitoring
- Vendor Performance Management
- Supply Chain Activity Score Card



USA

1821 S. Bascom Ave.
Suite 205
Campbell, CA 95008

26F Congress St.
Suite 275
Saratoga Springs, NY 12866-4156

Canada

666, boul. St-Martin O.
Suite 300
Laval, QC H7M 5G4

Call us

Toll free: 1.800.873.7803
Phone: 450.786.1666
Fax: 450.786.2013